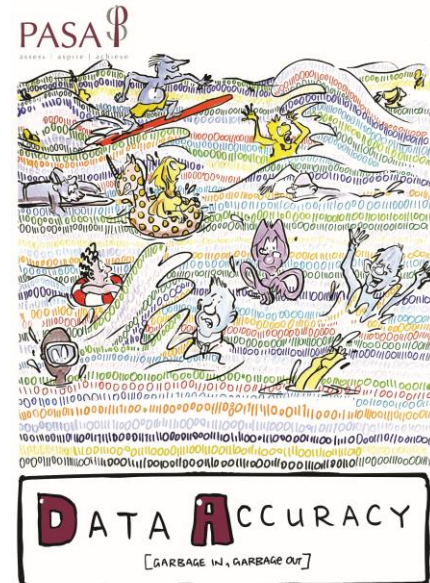


WEBINAR

Data

Friday 30 September 2022

11:30 – 12:30





Welcome to our webinar.

We hope you find it interesting and
informative

Chris Tagg

PASA Board Director





You Yu

Policy Delivery Lead – The Pensions Regulator



TPR view – Data Quality and Pension Dashboard

You Yu, Policy Delivery Lead,
30 Sep 2022

TPR expectations on data

PAY DATA THE ATTENTION IT DESERVES!



Know your data

Common data
Scheme specific
Data format



Measure your data

Annually
What and how to
measure
Prioritise by impact



Improve your data

Improvement plan
Focus on greatest
risk
Collaborative
Realistic
Monitor progress



Control your data

Process in place and
documented
Variety of tools

Data quality



Other areas could consider:

- Compliance
- Usability
- Member engagement

Dashboards and data quality



Savers need to be able to trust the data in front of them for dashboards to succeed.

Data quality is critical.



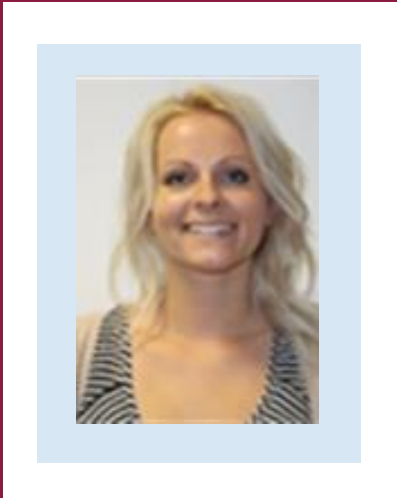
Pensions dashboards build on existing TPR expectations but drive-up importance/urgency



Matching depends on data quality – expect iterative process where matching criteria tighten as data quality improves.



Possible matches are an opportunity to improve the data quality.



Kristy Cotton
Chair of the PASA Data Working Group
Actuary, Deloitte – PASA Experts for Data



Webinar agenda

What is all the buzz about data?

- Current state of play
- What does the future look like?

What should pension schemes be doing?

- Data Strategies
- Data Reviews
- Data Management
- What does good look like?

Overcoming the challenges

- Common challenges and pitfalls
- How is PASA supporting the industry?



What is all the buzz about data?

At the heart of every scheme

DATA

At the heart of every
scheme

ADMINISTRATION

- ✓ Efficiency
- ✓ Automation
- ✓ Member Experience
- ✓ Accuracy

DIGITALISATION

Self-service and
dashboards



What is all the buzz about data?

More than administration

ACTUARIAL



Valuation consistency



Scheme funding level

INVESTMENTS

Funding decisions are
unreliable without good
data

COMMUNICATIONS

Delivering the right
message at the right
time



RISK TRANSFER EXERCISES

Data risk premiums

“

Data underpins all areas of pension scheme management and ultimately drives the outcomes for members – without good quality data, pensions schemes will face challenges in meeting their regulatory duties and providing members the right benefits at the right time, the ultimate objective.

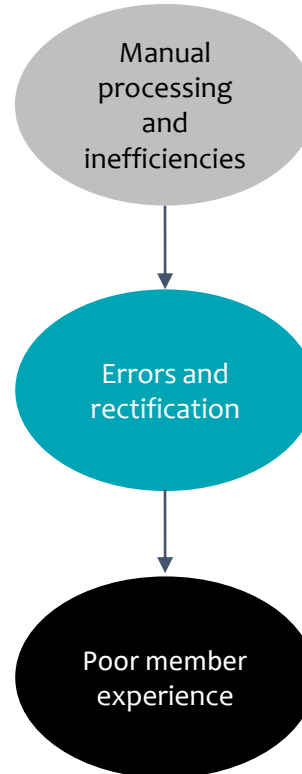
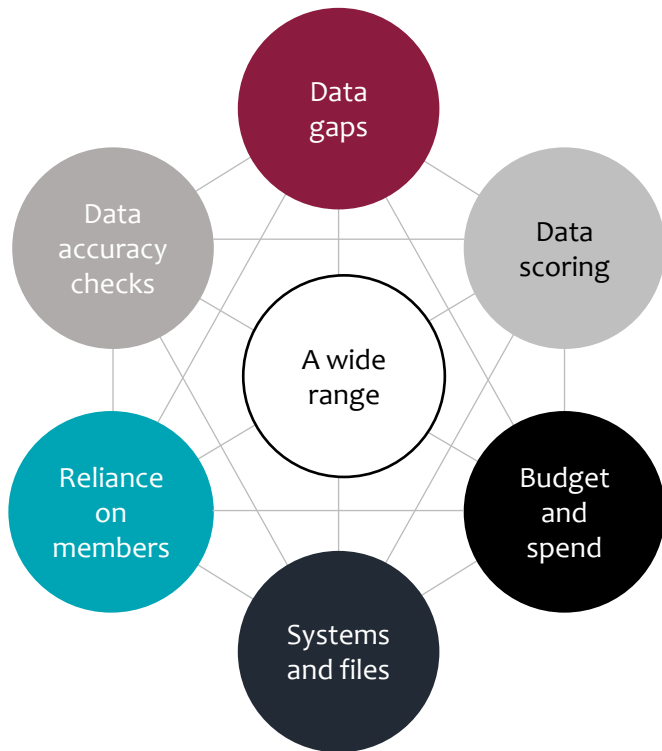
”

The Pensions Administration Standards Association, June 2021

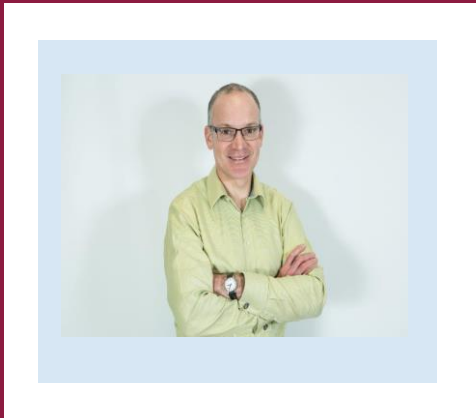


Current state of play

A mixed bag



- ➔ Actively reviewing and managing data
- ➔ Have a Data Management Plan and a Data Strategy
- ➔ Have data on their risk register with mitigations
- ➔ Investment in data
- ➔ Data security and protection



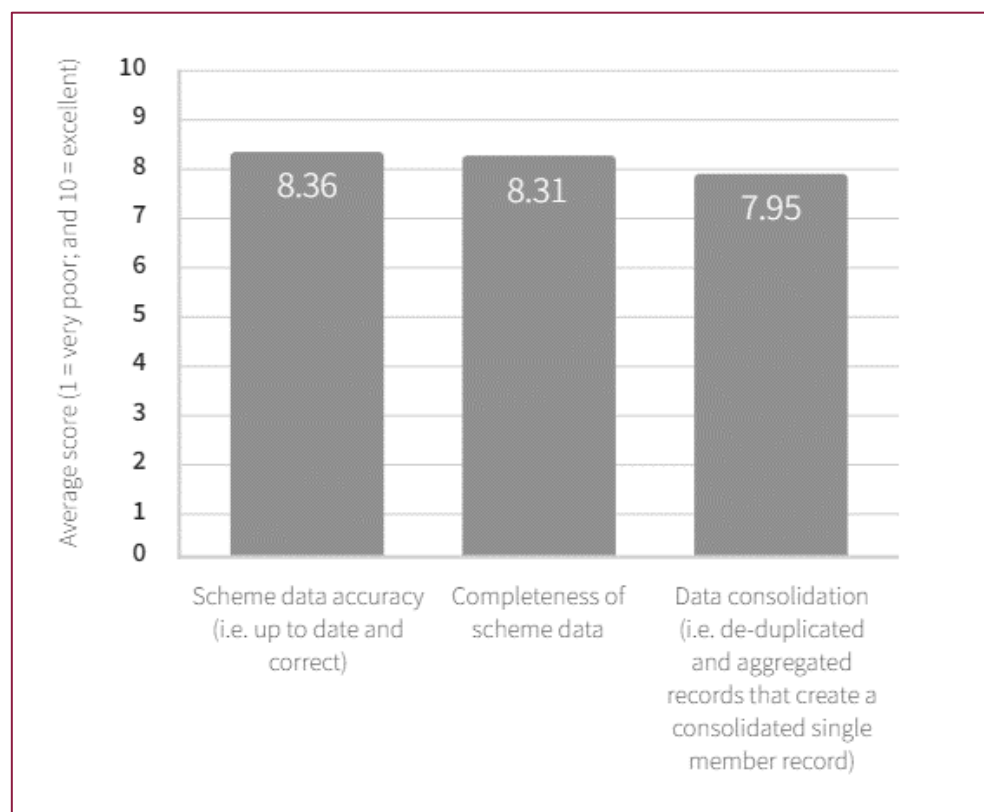
Alan Clay

Head of Strategy, Customer Data Solutions, LexisNexis Risk Solutions
PASA Experts for Identity Management



Trustee's view of data

How would you rate the quality of your scheme's member (common) data in the following areas?

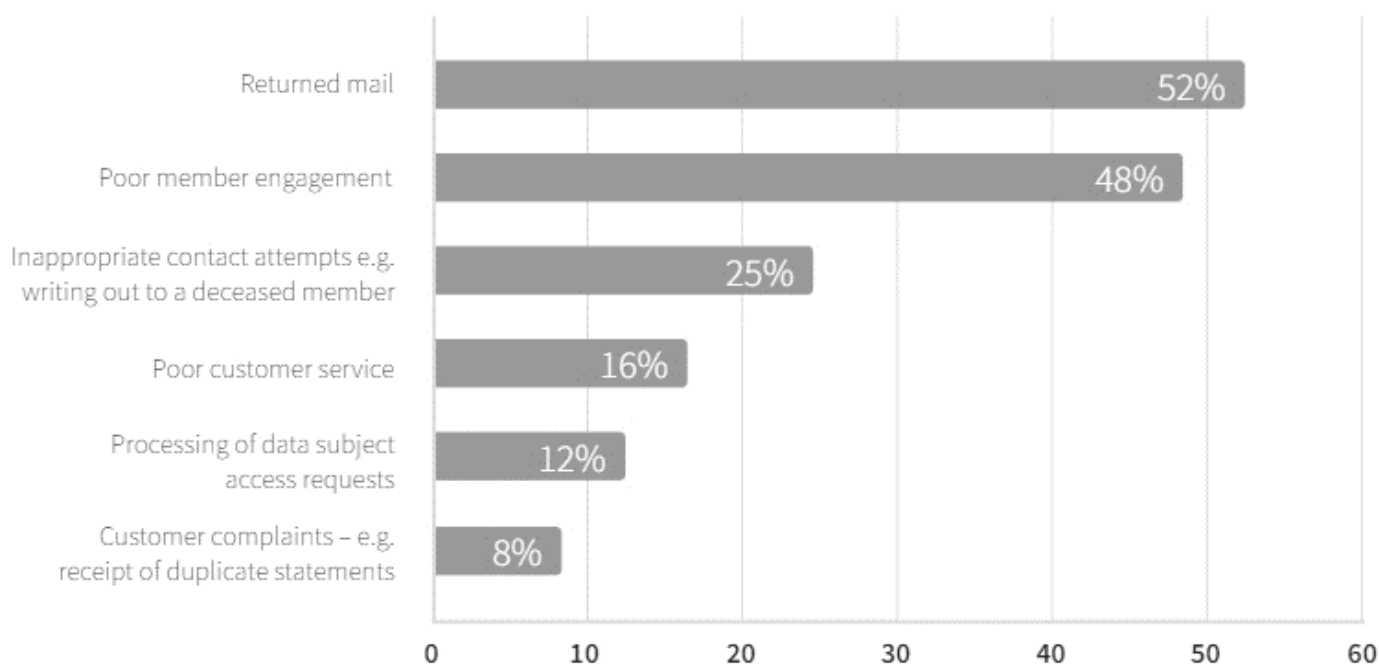


Source: Pensions: The Digital Dilemma – A report from LexisNexis® Risk Solutions and Professional Pensions



Trustee's view of data

Where are the challenges you have in relation to poor quality member data?



Source: Pensions: The Digital Dilemma – A report from LexisNexis® Risk Solutions and Professional Pensions



Real world data observations

National Insurance Number

- NINO is typically well populated, but has its own challenges:
 - Same NI number linked to two different people
 - Same person has multiple NINO's
 - Only part of NINO captured



Real world data observations

What have we seen in terms of common member data?

- ✚ Schemes are taking an increased interest in understanding their data
- ✚ Data completeness is high – as expected

Attribute	Completeness	Challenges
Name	100%	
First name	100%	1%
Middle name	45%	3%
Surname	100%	
Date of birth	99%	0.80%
Address	100%	0.25%

* 76% of UK consumers have a middle name

*Source: LexisNexis Risk Solutions data analysis



Real world data observations

What have we seen in terms of common member data?

- As you lift the lid data challenges become apparent
- Capturing (and maintaining) contact data remains a challenge
- Data maintenance is the key challenge (but 3rd parties can support)

Contact data	Average rate
Home / Landline	52%
Mobile	28%
Email	23%

*

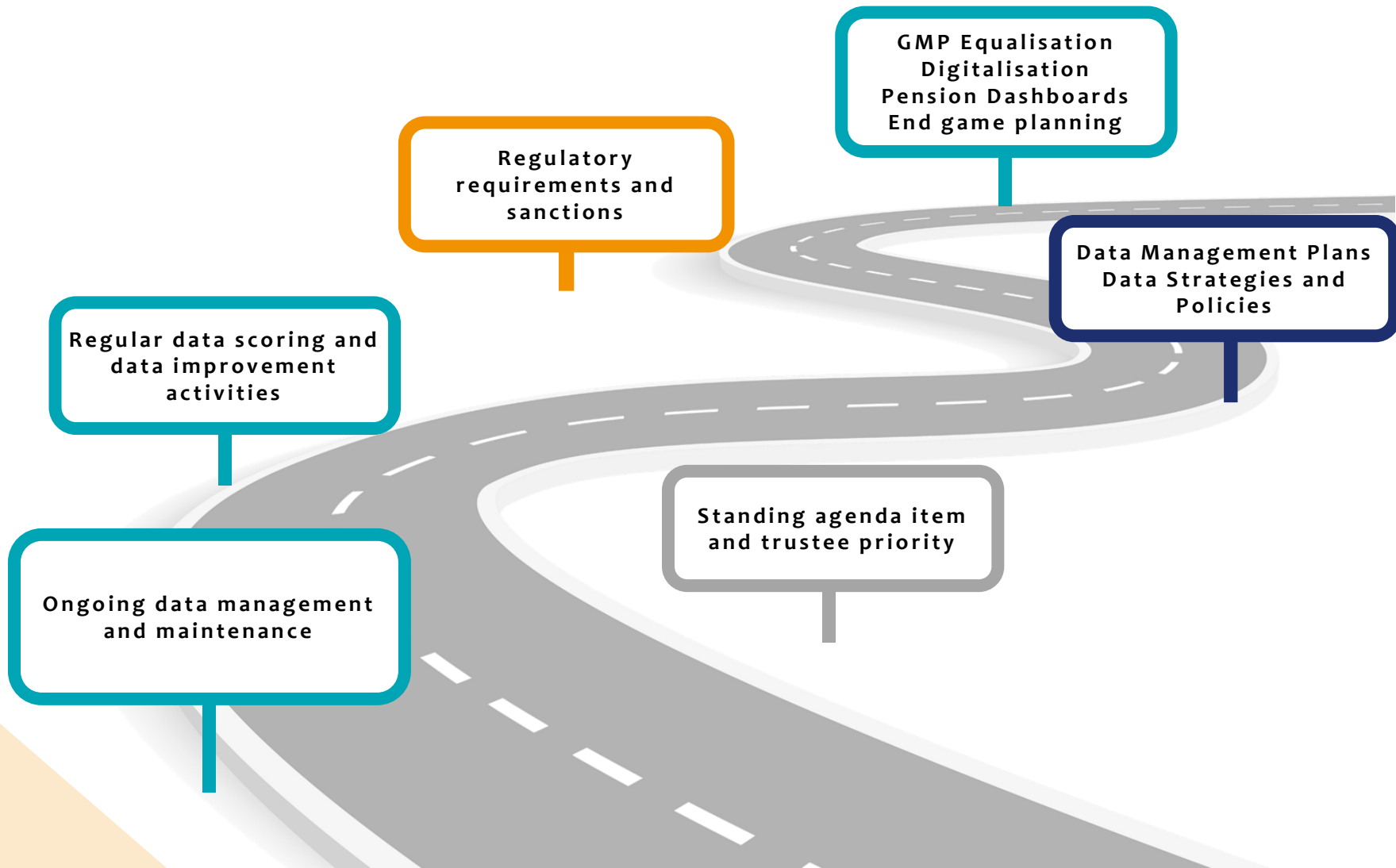
Currency of scheme data	Average rate
Living as stated	92%
Deceased	1%
Living at new address	4%

*

*Source: LexisNexis Risk Solutions data analysis



What does the future look like?



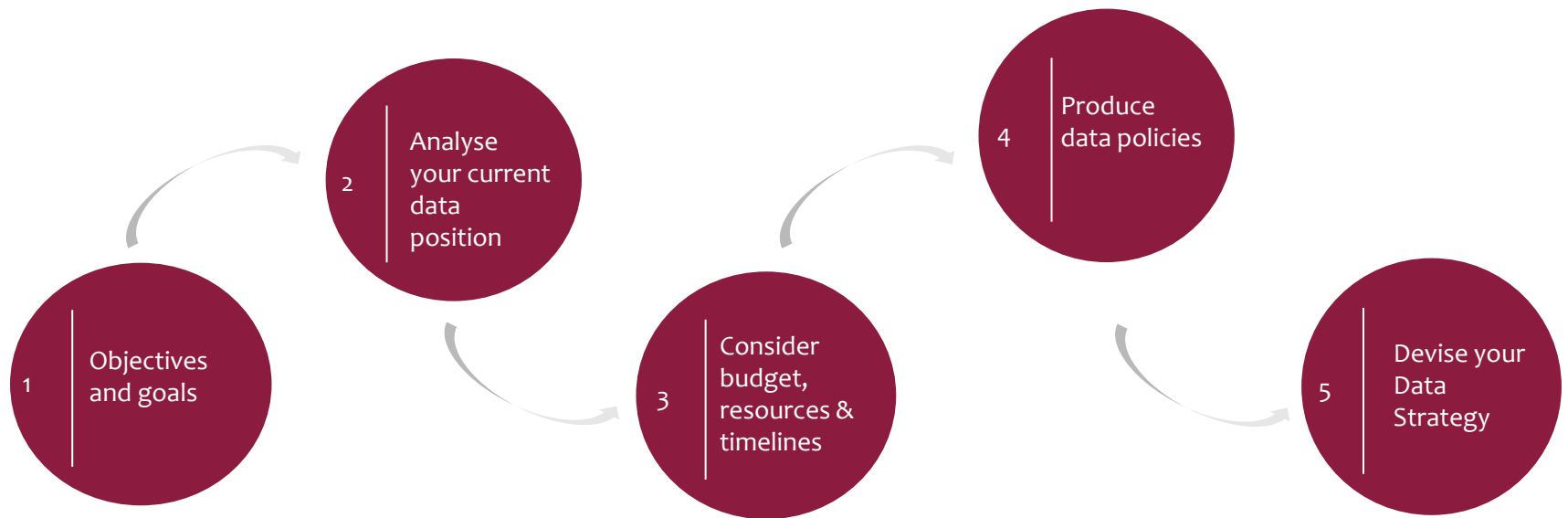
What should pension schemes be doing?



Data Strategies

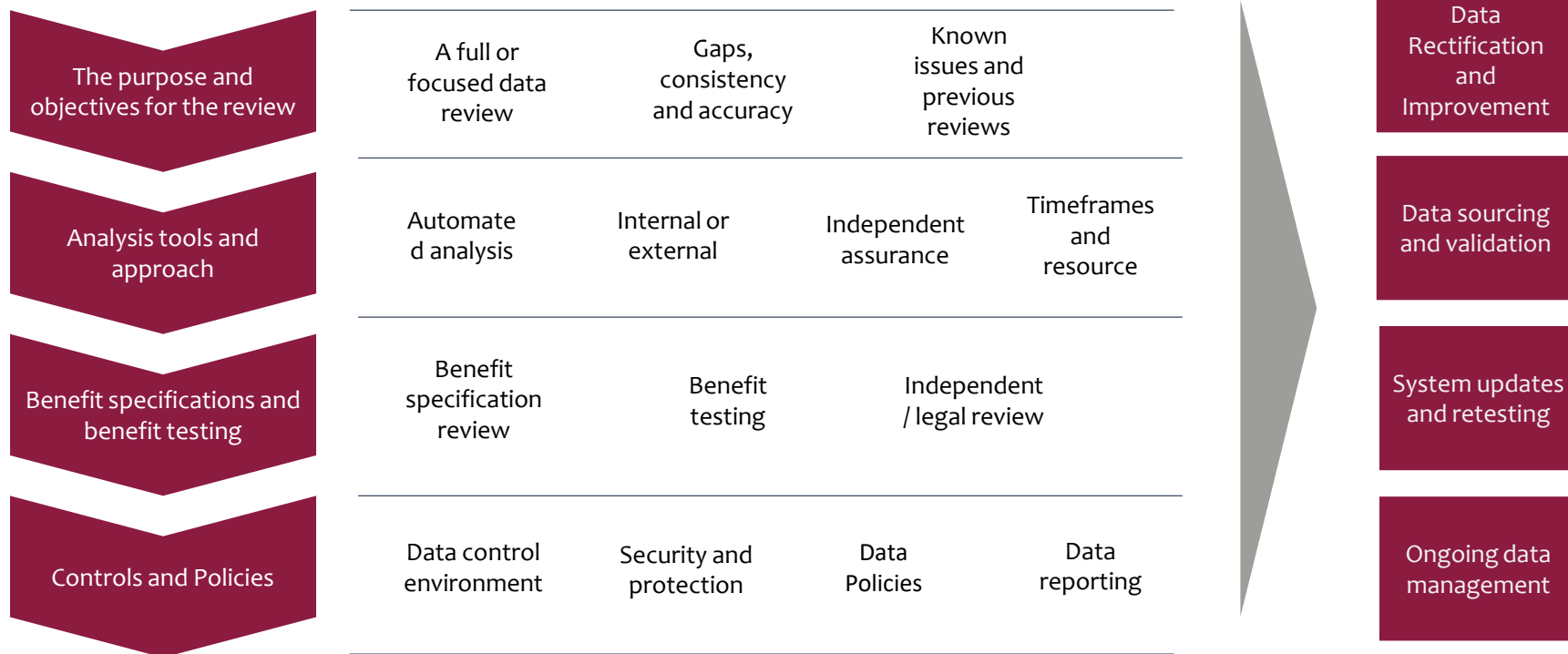
How to you devise a data strategy?

A data strategy is a key tool for trustees to manage their pension scheme appropriately and enables data priorities to be identified and resources managed, whilst taking steps to improve data quality and meet trustee duties.



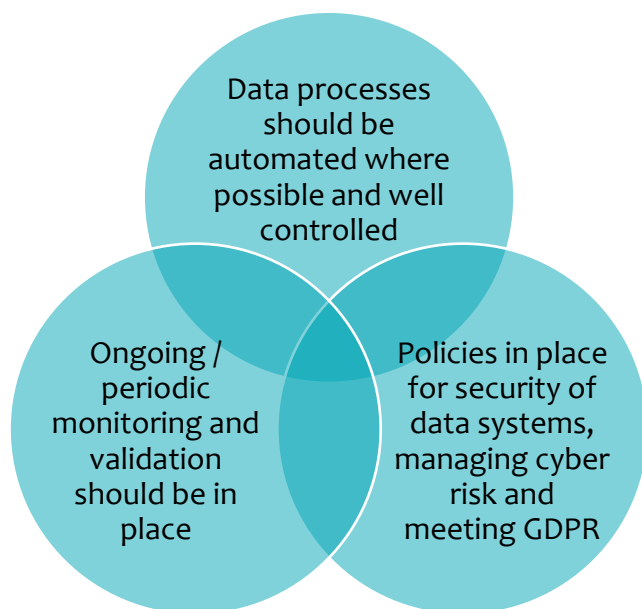
Data Reviews

Key steps to completing a data review

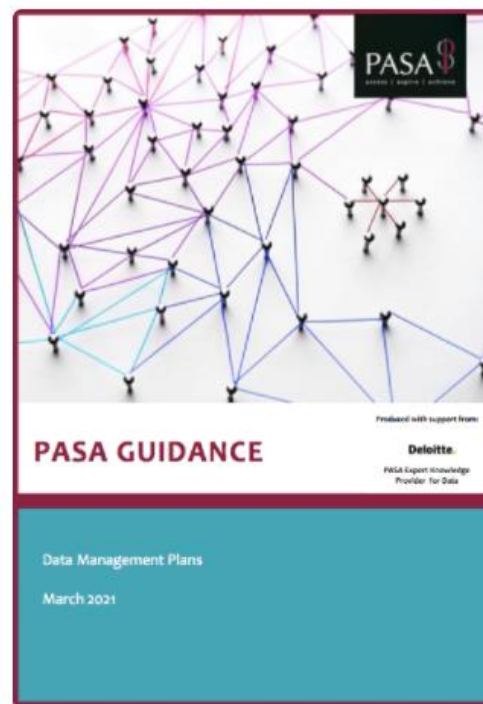


Data Management

Ongoing management is critical



The implementation of a **Data Management Plan** offers a means of documenting the data held by a pension scheme and a policy for managing it effectively.

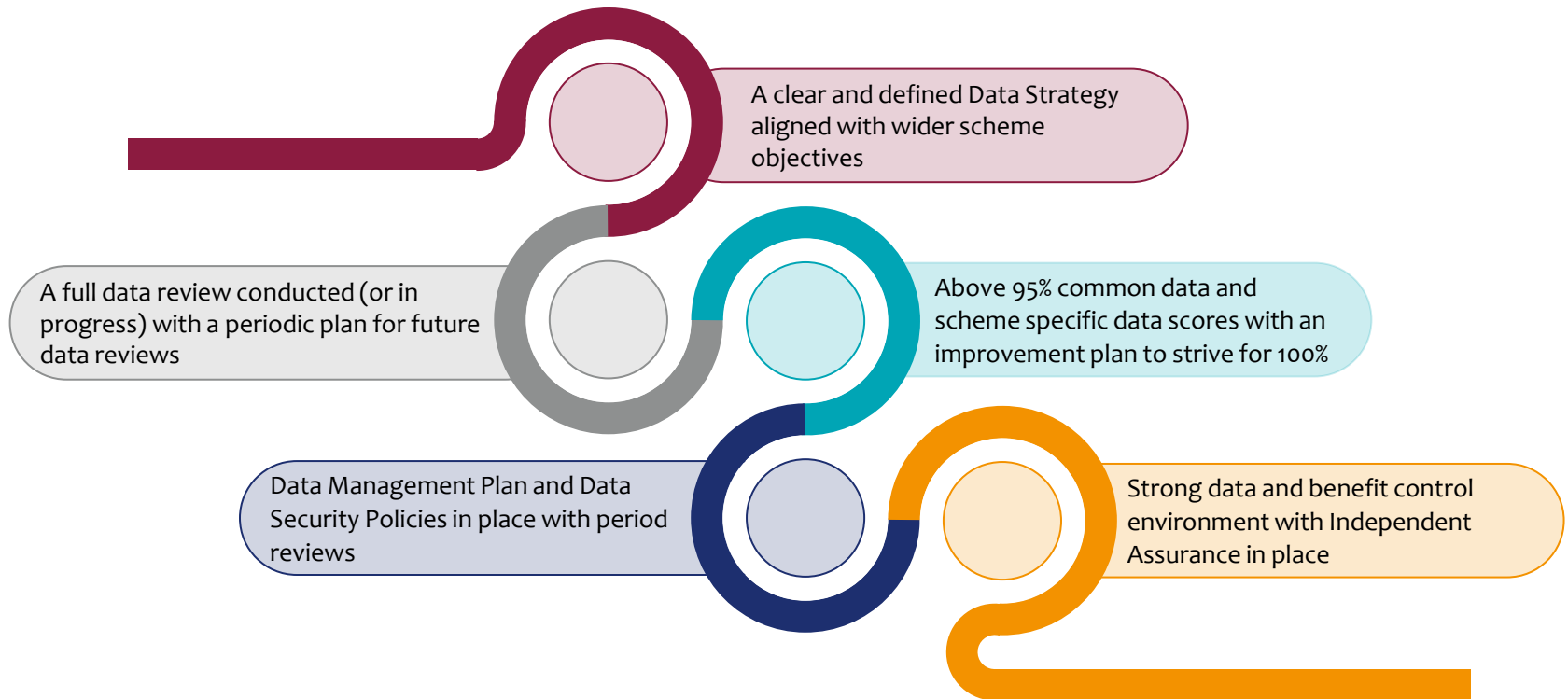


Many schemes have implemented a Data Management Plan.

For those that haven't, now is the time to take action.

What does good look like?

Getting your scheme in order



Overcoming the challenges



Common Challenges and Pitfalls

If only it was simple

One size doesn't fit all



- Scheme status, characteristics and membership.
- Quality of data and technology.
- Flexible and tailored approach.

Disruption to BAU



- Separation of teams and responsibilities.
- Collaboration with BAU team.
- Robust audit trail.

Independence and collaboration



- Independent assurance is important.
- Marking your own homework.
- Collaboration of advisers and teams.

Pragmatism



- Scope, perhaps a need, for pragmatism.
- Take all reasonable steps to correct data issues.
- The type and purpose of the data is an important consideration.

Resources



- Industry wide resource issue
- Working with your advisers & team to ensure the right resource for your data review projects.
- Prioritise and plan.

What is PASA doing?

We're here to help

PASA Data Working Group and Expert Knowledge Provider,
Deloitte

Regular publications released

PASA website

Conferences, webinars and other interactive forums

Guidance on Data Strategies and Reviews to follow

Contact us



QUESTIONS AND DISCUSSION



THINGS
TO
CONSIDER